



You are Important to Us and to Your Family.



Division 1181 A.T.U. New York Welfare Fund wants to help members stay healthy and active for as long as possible, so we have partnered with Life Line Screening to make preventive health screenings available to members and covered dependents for minimal cost.

The screenings identify risk for stroke, cardiovascular disease, abdominal aortic aneurysm, and other chronic conditions. The National Stroke Association warns that risk of stroke doubles every year after age 55, and cardiovascular disease is the #1 cause of death in the U.S. Discovering risk factors before you have symptoms will allow you and your doctor to work together to potentially prevent chronic disease.

The key preventive health screenings are:

- **Stroke/Carotid Artery Screening** — An ultrasound examination of the carotid arteries, to detect buildup of fatty plaque — the leading cause of strokes.
- **Abdominal Aortic Aneurysm Screening** — An ultrasound examination of the abdominal aorta, to detect an enlargement, which could rupture.
- **Atrial Fibrillation** — EKG sensors are placed on the arms and legs to detect an irregular heart rhythm that increases the risk of stroke by five times.
- **Peripheral Arterial Disease Screening (PAD)** — An ultrasound examination of the lower limbs to detect arterial plaque buildup in the lower extremities.
- **Osteoporosis Risk Assessment Screening** — A scan of the heel bone to identify abnormal bone density
- **Annual 6 For Life Health Assessment** — A screening that analyzes your risk for six chronic conditions: Heart Disease, congestive heart failure, stroke, diabetes, chronic obstructive pulmonary disease (COPD), and lung cancer.

Don't wait—call toll free today at 1-888-754-1543 to schedule your appointment. Please use Priority Code BATU117 to receive the special Local 1181 pricing. Visit us at www.lifelinescreening.com/atu.

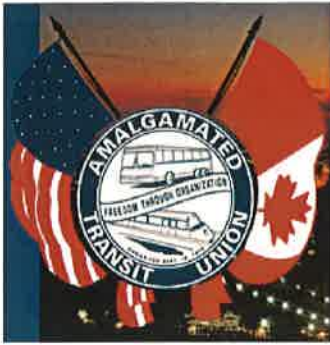
Sincerely

Nathalie Garbani

Nathalie Garbani, EdD, RVT
Director of Clinical Quality, Life Line Screening

**DIVISION 1181 A.T.U.
NEW YORK WELFARE FUND**





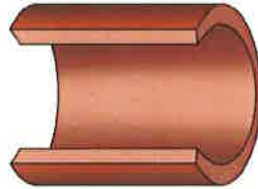
HEALTH BENEFITS NOTICE

Important preventive screenings NOW available at no or a minimal out of pocket cost.

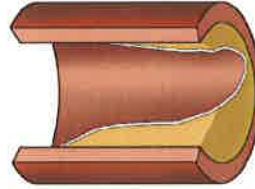
Painless • Non-Invasive • Convenient

Call toll-free 1-888-754-1543 between 9am-5pm Mon-Fri

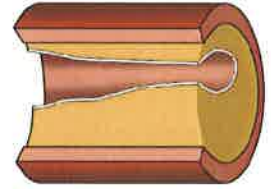
Plaque buildup can lead to stroke if undetected.



Clear Artery



Artery Moderately Blocked



Artery Significantly Blocked

- Member must be employed by a participating Company under 1181 and have medical coverage. Dependents are covered through family coverage only.

- Please let us know if you have had a physical since Jan. 1st, 2017.
- Cost sharing is due at time of registration.

	Age 21 – 49	All those Age 40 and over	Age 40 and over with risk factors
6 for Life Health Assessment – A disease risk assessment that calculates your risk for 6 chronic conditions: heart disease, heart failure, stroke, diabetes, chronic obstructive pulmonary disease and lung cancer.	✓	✓	✓
Carotid Artery Screening (Plaque) – Ultrasound evaluation of the carotid arteries that screens for buildup of fatty plaque – a leading cause of strokes.		✓	✓
Heart Rhythm Screening (Atrial Fibrillation) – A quick and easy test using EKG electrodes placed on the arms and legs to identify the presence or absence of an irregular heartbeat. Atrial Fibrillation increases the risk of stroke 5 times.			✓
Abdominal Aortic Aneurysm Screening – Ultrasound is used to screen for the presence of an aneurysm (enlargement) in the abdominal aorta that could lead to a ruptured aorta.		✓	✓
Peripheral Arterial Disease Screening – Evaluates for peripheral arterial disease (plaque buildup) in the lower extremities. Patients with PAD (peripheral arterial disease) are 3 to 6 times more likely to have a heart attack or stroke.			✓

Life Line Screening is the nation's leading provider of community based preventive health screenings. Since 1993, 8 million people have been screened, helping people like you understand their risk for chronic disease.

Call 1-888-754-1543 for an appointment today!



**DIVISION 1181 A.T.U. –
NEW YORK WELFARE FUND**

